



Making

Routine Chemistry

Convenient and Efficient

The Perfect Match

of Quality, Convenience and Cost Efficiency

Clinical chemistry provides comprehensive information on the patient's health status. This includes routine parameters, like enzymes, substrates and electrolytes, but also special analytes for differentiated diagnosis, as well as specific serum proteins.

The comprehensive portfolio of AMP clinical chemistry reagents covers more than 50 parameters required for routine and specific diagnostics. Almost all parameters are available in stable liquid format - some of them even as mono reagents - optimized for excellent stability and outstanding performance.

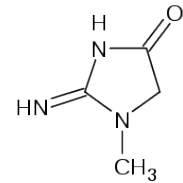
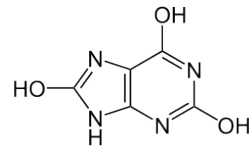
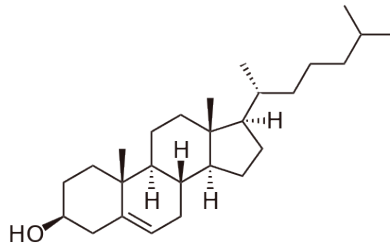
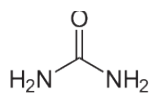
The reagents are provided in various convenient kit sizes to address the specific needs of different types of laboratories. Kits for manual use with spectrophotometers are also available including standard or calibrator. Proven applications for a wide range of popular auto-analyzer models enable universal use of the reagent line.

The commitment to highest quality standards in production and the CE mark as visual evidence of full compliance with the in-vitro diagnostic directive give the confidence of having the ideal products in hand - the best choice in respect to convenience, analytical performance and cost efficiency.



AMP Clinical Chemistry Reagents

- Enzymes
- Substrates
- Lipids
- Electrolytes
- Serum Proteins
- Calibrators
- Controls



6 941 sodium 11	9 0122 magnesium 12
22 990 Na	24 305 Mg
39 098 rubidium	40 078 strontium

ese	iron 26	cobalt 27	nickel 28	copper 29	zinc 30
1	Fe	Co	Ni	Cu	Zn
um	55.845 ruthenium	58.933 rhodium	58.693 palladium	63.546 silver	65.39 cadmium

Quality

- Continuous quality monitoring for raw materials
- Highest quality standards applied in production
- Formulations optimized for outstanding performance
- Full range of traceable calibrators and controls

Convenience

- Most parameters available in stable liquid format
- Ready-to-use - no more reconstitution required
- Kits including standards available for manual use
- Proven applications for various popular auto-analyzers



Cost Efficiency

- Excellent stability virtually until the final drop
- Multiple kit sized tailored to individual requirements
- Reliable performance eliminates the need of repeats
- Multi-parameter calibrators and controls available



AMP Clinical Chemistry Reagents

Enzymes			
Acid Phosphatase	Kinetic (fast red TR salt)	3	P
Adenosine Deaminase	Enzymatic	2	L
Alkaline Phosphatase	Kinetic (DEA or IFCC)	2	L
ALT / GPT	Kinetic (IFCC)	2	L
AST / GOT	Kinetic (IFCC)	2	L
Amylase	Kinetic (CNP-G3)	1	L
Cholinesterase	Kinetic (Butyrylthiocholine)	2	L
CK NAC	Kinetic (IFCC, DGKC)	2	L
CK MB	NAC immunoinhibition	2	L
Gamma GT	L-γ-Glutamyl-p-nitroanilide	2	L
G-6-PD	Kinetic	2	P/L
LDH-L	Kinetic (IFCC)	2	L
LDH-P	Kinetic (SFBC)	2	L
Lipase	Kinetic (Methylresorufin)	2	L

Substrates			
Albumin	Bromocresol	1	L
Ammonia	Endpoint	2	P
Bilirubin direct	Sulphanilic acid	2	L
Bilirubin total	Sulphanilic acid	2	L
Carbon Dioxide	PEPC	1	L
Creatinine (5+1 or 1+1)	Alkaline Picrate (Jaffe)	2	L
Creatinine PAP	Enzymatic	2	L
Fructosamine	Nitroblue tetrazolium	2	P/L
Glucose PAP	Glucose oxidase	1	L
Hemoglobin	Cyanomethemoglobin	1	L
Lactate	L.oxidase / peroxidase	2	L
Microprotein	Pyrogallol red	1	L
Total Protein	Biuret	1	L
Urea	Urease / GLDH	2	L
Uric Acid	Uricase / Peroxidase	1	L

Calibrators	
Aqueous standards	L
Multi- or single parameter serum calibrators	Lyo

Controls	
Multi-parameter serum controls - normal and abnormal	Lyo
Single parameter serum controls in various levels	Lyo

Lipids			
Cholesterol PAP	Chol. Esterase / Oxidase	1	L
HDL Cholesterol direct	Direct clearance	2	L
HDL Cholesterol	Precipitant reagent	1	L
LDL Cholesterol direct	Direct clearance	2	L
Triglycerides	Enzymatic ESPAS	1	L

Electrolytes			
Calcium Arsenazo III	Arsenazo III	1	L
Calcium OCPC	O-Cresolphthalein	2	L
Chloride	Mercury (II) thiocyanate	1	L
Copper	3,5-di-Br-PAESA	2	L
Iron Chromazurol	Chromazurol S	1	L
Iron Ferrozine	Colorimetric, Ferrozine	2	L
Iron TIBC	Saturation	2	L/P
Iron TIBC	Modified Persijn method	3	L
Magnesium	Xylidyl blue	1	L
Phosphorus	Ammonium molybdate	1	L
Potassium	Enzymatic	2	L
Sodium	Enzymatic	2	L
Zinc	5-Br-PAPS	2	L

Other Parameters			
β-Hydroxybutyrate	Endpoint	1	L
Ethanol	Endpoint	1	P
HBA1c	Enzymatic	3	L
HBA1c	Latex agglutination	2	L

Serum Proteins			
Antistreptolysin (O)	Latex turbidimetry	2	L
C-reactive Protein	Latex turbidimetry	2	L
C-reactive Protein us	Latex turbidimetry	1	L
Ferritin	Latex turbidimetry	2	L
Immunoglobulin A	Antiserum method	1	L
Immunoglobulin G	Antiserum method	1	L
Immunoglobulin M	Antiserum method	1	L
Lipoprotein (a)	Latex turbidimetry	2	L
Microalbumin	Latex turbidimetry	2	L
Rheumatoid Factor	Latex turbidimetry	2	L

1, 2, 3 ...number of reagents included in the kit, L ...stable liquid, P ...powder, Lyo ...lyophilized

AMEDA Labordiagnostik GmbH

Krenngasse 12

8010 Graz, Austria

Phone +43 316 69 80 69

Fax +43 316 69 80 69 12

E-mail office.graz@amp-med.com

www.amp-diagnostics.com



AMP Polska sp. z o.o.
AMP Diagnostics s.r.l.

Boleslawa Prusa 37/1, 30-117 Kraków, Poland, Phone: +48 12 294 02 78, E-mail: office.krakow@amp-med.com
Str. Fabricii 118-A, 400632 Cluj-Napoca, Romania, Phone: +40 264 425 934, E-mail: office.cluj@amp-med.com